

socialventure

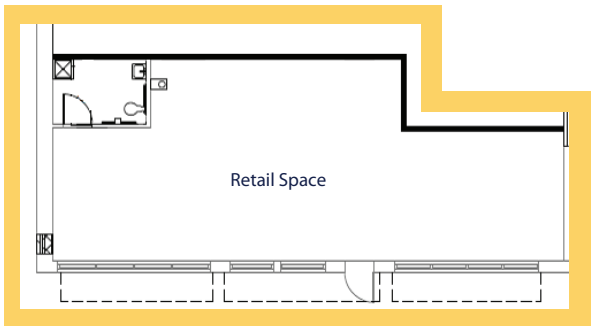
BIRMINGHAM'S HUB FOR SOCIAL ENTREPRENEURS



R E T A I L S P A C E

Commercial retail space available!
5529 1st Ave. S | Birmingham, AL 35212

- 986.625 ft²
- Internet and utilities (minus electric) included
- Private bathroom
- Access to conference and meeting rooms
- Prime street frontage on 1st Ave. South



1st Avenue South

For more information please contact
REVBirmingham at
205.595.0562 or leasing@revbirmingham.org

